

# **RSView SE Direct Connect**

---



## Table of Contents

RSView SE Direct Connect.....	1
Overview .....	1
WIN-911 Bridge Service .....	3
Importing Alarms From RSView SE .....	4
Import Source .....	4
Importing Alarms.....	7
Global Options.....	9
Data Source Definition.....	11
Digital Definitions.....	13
Digital Definition.....	13
Base Definition.....	14
Alarm Conditions.....	15
Sounds .....	17
Changeable .....	18
Analog Definitions .....	19
Analog Definition.....	19
Base Definition.....	21
Conversion.....	23
Alarm Limits .....	24
Sounds .....	26
Changeable .....	27
Watchdog Timer Definitions.....	28
Watchdog Timer Definition.....	28
Base Definition.....	30
Alarm Conditions.....	31
Sounds .....	32
Troubleshooting.....	33



# RSView SE Direct Connect

## Overview

The RSView SE Direct Connect option provides a means of connecting directly to Rockwell Supervisory Edition version 3.20/4.0 or FactoryTalk View SE 5.0. The WIN-911 direct connect interface to RSView SE/FactoryTalk View SE facilitates access to alarms generated by RSView SE/FactoryTalk View SE.

An Area can contain at most one server. Stand-alone Applications consist of a single root Area with a single server. Distributed Applications support a hierarchy of Areas branching from the Root Area and allow Areas to be contained within other Areas allowing for multiple Servers. The important concept to take from this discussion is that an RSView SE/FactoryTalk View SE Alarm can be uniquely identified by specifying a Tag and its location within an Area hierarchy.

Many RSView SE/FactoryTalk View SE Alarms can be associated with a single Area. WIN-911 implements Data Sources so that the Area information needs to be configured only once. An RSView SE Direct Connect Data Source must specify a location within an Area hierarchy. WIN-911 defines an Alarm with a Data Source (Area path) and an Item Name (Data Tag), which uniquely identifies an RSView SE/FactoryTalk View SE Alarm. Multiple data sources can be configured for RSView SE Direct Connect. Each Area/Server WIN-911 is monitoring will require its own data source to be configured. The RSView SE Direct Connect supports the ability to reconnect to any of the configured data sources if the connection is ever lost.

The WIN-911 configurator has an import facility for RSView SE/FactoryTalk View SE Alarms that takes as input the Tag and Alarm \*.CSV files that are exported with the RSView SE Tag Import and Export Wizard. These \*.CSV files contain information about Tags and Alarms from a specific Project, but do not specify the Area that contains that project. When importing Alarms from RSView SE/FactoryTalk View SE, the user must select the Tag and Alarm \*.CSV files and must specify the Area path associated with those files. The WIN-911 import facility uses the Area path to generate a Data Source and associates the imported Alarms with that Data Source.

Note: The RSView SE Direct Connection only supports alarm tags. As 411 reports require data tags, they are not available to RSView SE Direct Connections.

The RSView SE Direct Connect supports watchdog timers. The RSView SE watchdog timers can be configured in two ways. Since WIN-911 only receives alarm event information from RSView SE/FactoryTalk View SE and not data tag event information, WIN-911 must monitor a changing alarm condition opposed to a changing data value. In this case the watchdog timer would be set to value greater than the reoccurring alarm condition. You can also use the RSView SE watchdog timer to monitor the connection to the RSView SE/FactoryTalk View SE area/server. If the connection to the specific area/server is lost, WIN-911 will create an alarm. Both watchdogs have the ability to return to normal.

The RSView SE Direct Connect does not support Filter tags. The RSView SE Direct Connect does however support Dynamic properties. These properties: Tag Sound;

## RSView SE Direct Connect

Description; Analog State Sound; Digital State Sound; Priority; and Units, take text strings configured in RSView SE/FactoryTalk View SE and use them in WIN-911. These also have the ability to be disabled allowing the user to configure these properties manually in WIN-911.

RSView SE/FactoryTalk View SE assigns Severities to Alarms, ranging from 1 (most severe) to 8 (least severe). WIN-911 uses this information in two ways. First, WIN-911 can filter RSView SE/FactoryTalk View SE Alarms based on the Severity of the Alarm. A Severity filter is configured with a range of Severities. Any RSView SE/FactoryTalk View SE Alarms outside this range will be ignored by WIN-911. The default Severity filter range for WIN-911 is 1-8 so that no Alarms are ignored. The Second use of Severities by WIN-911 is to assign Priorities, which are used in determining the order that notifications are sent. Static Priorities are set during imports where Severities 1-3 map to High Priority, 4-6 map to Medium Priority, and 7-8 map to Low Priority. These Static Priorities are only used if WIN-911 is not configured for Dynamic Priorities. For Dynamic Priorities, Severities are mapped to Priorities by spreading the Severities as evenly as possible over the three WIN-911 Priorities based on the configured Severity filter. For example, if the configured Severity Filter range is 1-5, then Severities 1-2 map to High Priority, 3-4 map to Medium Priority, and 5 maps to Low Priority.

RSView SE/FactoryTalk View SE Analog Alarms allow up to 8 Thresholds to be configured. RSView SE/FactoryTalk View SE Thresholds must be either Increasing or Decreasing. An Increasing Threshold generates an alarm when the process variable goes above the Threshold, and a Decreasing Threshold generates an alarm when the process variable goes below the Threshold. Increasing Threshold alarms are mapped to WIN-911 High alarms and Decreasing Threshold alarms are mapped to WIN-911 Low alarms.

## WIN-911 Bridge Service

The RSView SE Direct Connect has a unique service that runs between RSView SE/FactoryTalk View SE and Scan & Alarm to provide a bidirectional interface. The WIN-911 Setup installs the service if it detects the presence of RSView SE/FactoryTalk View SE on the local computer. After the installation RSView SE/FactoryTalk View SE will have to be restarted, at which time the RSView SE/FactoryTalk View SE Client will launch the WIN-911 Bridge Service as part of its startup routine.

When running in distributed mode, RSView SE/FactoryTalk View SE Clients receive information concerning what services to start based on information provided by its server, including the command to start the WIN-911 Bridge Service. If you are deploying WIN-911 on a distributed system and require information from a remotely located server, then the administrator will need to modify the SLHMI-MLHMI Target.xml and SLHMI Target.xml on the remote machines. This is accomplished through running the XMLRSView.exe tool (located in WIN-911 V7\Tools) on the remote server machine.

Adding the \*.XML initialization files for both client and server machine:

Run the following command line from a command prompt in the folder where the XMLRSView.exe resides (for remote servers you will have to copy the file to the remote computer where the server resides):

**C:\Program Files\Specter Instruments\WIN-911 V7\Tools\XMLRSView.exe**

If WIN-911 and RSView SE/FactoryTalk View SE do not interface properly, refer to RSView SE Direct Connect Trouble Shooting, at the end of this Help file, for manual registration procedures.

Note: When a RSView SE/FactoryTalk View SE "Patch" or "Upgrade" is applied to your Rockwell system, the "\*.XML" files are likely to be recreated and hence, lose the WIN-911 Bridge Server commands. You must re-run the XMLRSView.exe on all WIN-911 concerned computers each time you update the Rockwell software .

# Importing Alarms From RSView SE

## Import Source



Use the WIN-911 Configurator's File\Import function to import your RSView SE/FactoryTalk View SE tags. The workflow begins in RSView SE/FactoryTalk View SE where you will export your RSView SE/FactoryTalk View SE data into \*.CSV files. Once the \*.CSV (Tag and Alarm) files are created you may use the WIN-911 Configurator Import function to browse and selectively import tags and assign them to alarm groups.

## RSView Supervisory Edition Import

### Generate RSView SE/FactoryTalk View SE Export

- From the RSView SE/FactoryTalk View SE Studio Tools pull-down menu select Tag Export and Import Wizard.
- Select the Operation you would like to perform.
- Export RSView SE/FactoryTalk View SE tag database to \*.CSV files.
- Choose the RSView SE/FactoryTalk View SE project that contains the tags you want to export.
- Project Type: Supervisory Edition
- Project: C:\Documents and Settings\All Users\Documents\RSView Enterprise\SE\HMI Projects\My App\WWTP App.sed

Note: Choose the proper \*.SED file and take note of the path.

- Specify names for the destination files
- Check both Tags and Alarms, name the files and take note of the paths so you can find them during the WIN-911 import.
- Click Finish to complete the export portion.

### Start WIN-911 Import

From the WIN-911 Configurator File pull-down menu select Import/RSView SE.

### RSView SE Export Files

Path to RSView SE Tags \*.CSV



**RSView Supervisory Edition Import**

**RSView SE Export Files**

Path to RSView SE TAGS \*.CSV file :

C:\Users\Public\Documents\RSView Enterprise\SE\HMI Projects  
Waste Water Project\Waste Water Project-Tags.CSV

Path to RSView SE ALARMS \*.CSV file :

C:\Users\Public\Documents\RSView Enterprise\SE\HMI Projects  
Waste Water Project\Waste Water Project-Alarms.CSV

Automatic File Name Filtering

**RSView SE Project**

Area Name : /Waste Water

Use Area for Tag Name Prefix

Use Area to Generate Access Name

**WIN-911 Data Source**

Access Name : SE

Use the Browse button to map the location of the “\*Tags.CSV” file created by the export.

**Path to RSView SE Alarms \*.CSV**

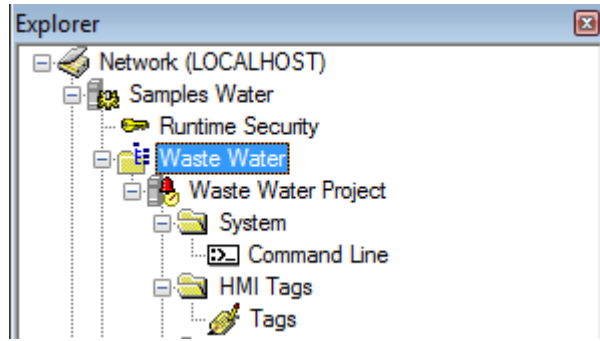
Use the Browse button to map the location of the “\*Alarms.CSV” file created by the export.

**Automatic File Name Filtering**

File filtering suppresses all files except ones ending in “-Tags.CSV” for the tag import and “-Alarms.CSV” for the Alarm import, to make selection of the proper files easy.

**RSView SE Project**

**Area Name**



*A screenshot of the explorer pane in FactoryTalk Studio with the area highlighted in blue.*

FactoryTalk places HMI tags in areas. You must specify the name of your area here. This field is case sensitive and the area name must be preceded by a slash, "/." In the above screenshot of the FactoryTalk Studio explorer pane, the Waste Water Project HMI server, along with its HMI alarm tags, appear under the Waste Water area. In this example, you would enter "/Waste Water" in Area Name field to monitor alarms on the Waste Water Project server.

Stand-alone or local SE applications may not have an area defined. In this case, simply enter a slash in the Area Name field.

#### **Use Areas for Tag Name Prefixes**

This option prepends the area to the tag names during an import. This is an easy way to keep tags organized when configuring a multi-area Distributed project.

#### **Use Area to generate Access Name**

This option makes the Area Name the Access Name. If the Area Name is cryptic then you may wish to use a different and more meaningful name. The Access Name must be unique and each Area must have its own Access Name.

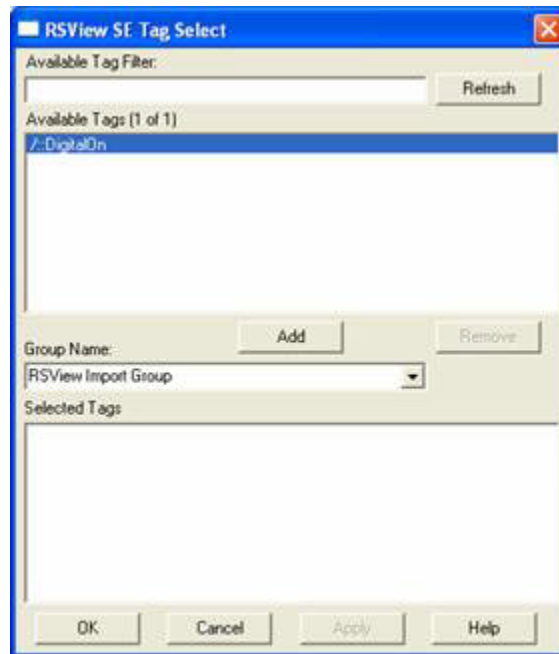
### **WIN-911 Data Source**

#### **Access Name**

The "Access Name" is a unique user defined string that identifies the RSView SE Direct Connect conversation. This name is later found in a pull down menu for selection purposes. You may have as many "Access Names" as needed. Each Access Name assigns the associated tag name to the RSView SE/FactoryTalk View SE Area.

Click OK to proceed to the tag import.

## Importing Alarms



To select a block of tags to import quickly, click on the first tag of the block.

Note: Lite Mode users are prohibited from conducting block imports.



Next, scroll down to the bottom of the block list and shift-click the last tag.

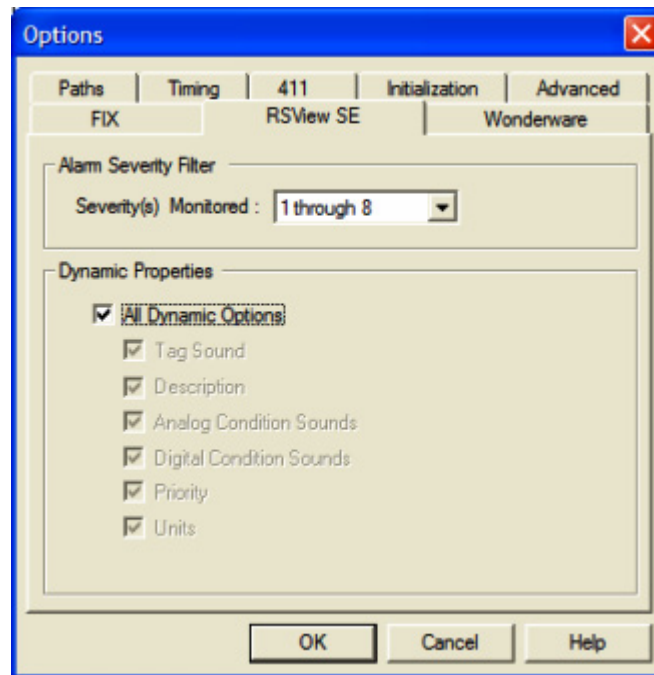
## RSView SE Direct Connect



Once all the tags are selected, press the Add button and the application will fill the Selected Tags.

If you wish to remove any of the tags from the list before the import is applied, select them and click the Remove button. Otherwise, click Apply and the WIN-911 database import will complete.

## Global Options



The RSView SE tab of the Global Options allows the user to select the Alarm Severity Filter and Dynamic Properties for the RSView SE Direct Connect data.

Note: RSView SE Watchdogs do not use Dynamic Properties.

### Alarm Severity Filter

The range of alarm severity that WIN-911 will monitor is selected through this pull-down menu. All alarms falling outside of the selected filter will be ignored. Level one severity is the most severe.

### Dynamic Properties

The RSView SE Direct Connect is designed to allow as much seamless integration between Rockwell and WIN-911 as possible. This includes receiving as much information from RSView SE/FactoryTalk View SE as possible dynamically during runtime, thus preventing the need to redundantly and statically configure information in WIN-911. However, instances can arise where this is not desired or possible.

### All Dynamic Options

Enables all dynamic functions.

### Tag Sounds

Dynamic Tag Sounds is the preferred mode of WIN-911 audio annunciation. It uses a two tiered hierarchy of optional text sources to build the audio message at runtime. The first choice of a text source for the Tag Sound extraction is the RSView SE/FactoryTalk View

SE Tag Description. This text will be provided to WIN-911 during runtime as the data is passed from RSView SE/FactoryTalk View SE. If the RSView SE/FactoryTalk View SE Tag Description is undefined then WIN-911 will use the WIN-911 Tag Sound which is statically defined in the WIN-911 configuration file. When both sound text sources are undefined no sound will be generated.

### Description

Dynamic descriptions accept description text from RSView SE/FactoryTalk View SE during runtime as alarms occur and are passed to WIN-911. When static descriptions are configured or dynamic text is not available then WIN-911 uses the text defined in the alarm Base Definition.

### Analog State Sounds

Dynamic Analog State Sounds are generated by reading text strings acquired from RSView SE/FactoryTalk View SE during runtime as the data is passed from RSView SE/FactoryTalk View SE to WIN-911. This string is called the "Threshold Label." If the Threshold Label is not available when the alarm data is passed, then WIN-911 falls back to the Analog Sound text that is statically defined in the WIN-911 configuration (Analog Definition, Sounds tab). When the check box is left unchecked then the RSView SE/FactoryTalk View SE Threshold Label is ignored and only the text in WIN-911 is used.

Note: If both the dynamic and static analog state sounds are undefined WIN-911 will use a hard coded string of "Threshold X" for alarm state annunciation, where "X" is a variable of 1 through 8 representing the actual level.

### Digital State Sounds

Dynamic Digital State Sounds are generated by reading text strings acquired from RSView SE/FactoryTalk View SE during runtime as the data is passed from RSView SE/FactoryTalk View SE to WIN-911. This string is called the "Alarm Label." If the Alarm Label is not available when the alarm data is passed, then WIN-911 falls back to the Digital Sound text that is statically defined in the WIN-911 configuration (Digital Definition, Sounds tab). When the check box is left unchecked then the RSView SE/FactoryTalk View SE Alarm Label is ignored and only the text in WIN-911 is used.

### Priority

Dynamic priority accepts severity level data from RSView SE/FactoryTalk View SE during runtime as alarms occur and are passed to WIN-911. When the alarm priority is configured statically, WIN-911 sets the priority during configuration and it is not modifiable at runtime.

### Units

Dynamically configured units accept unit text from RSView SE/FactoryTalk View SE during runtime as alarms occur and are passed to WIN-911. When the engineering units are defined statically they are set in the WIN-911 Configurator during development in the Analog Alarm Base Definition tab and are not modifiable during runtime.

## Data Source Definition



This button is used to setup data communications. Data point addressing can be monotonous and syntactically rigorous. Rather than being forced into remembering (and exactly typing) the Direct Connect invocation string for each “Item Name” to be alarmed, you merely select the appropriate data source type from the selection list. When you define data points, a selection box will provide you with a list of “Access Names” to choose from. Simply select “RSView SE Direct Connect”.

Note: The data source definition is automatically configured if the RSView SE database was imported using WIN-911's RSView SE import utility.

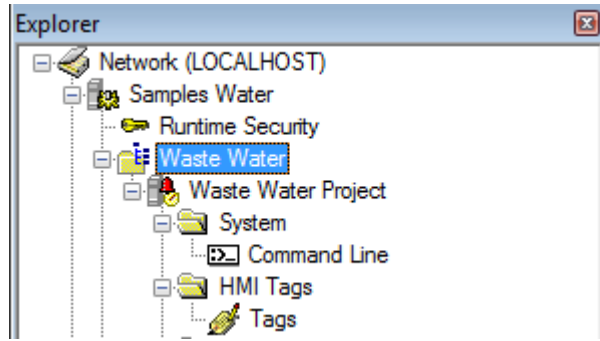
A data source for RSView SE Direct Connect users consists of two fields, the Access Name and an Area Name. Both must be present to be valid and the user can configure as many Access Names as needed, as long as they are unique.

### Access Name

The Access Name is a tool that can be used to give a cryptic Alarm Area name an alias name that may be more user friendly than the actual alarm area syntax. This name will show up in the Digital and Analog definition dialogs to assign the proper area to the tag.

### Area Name

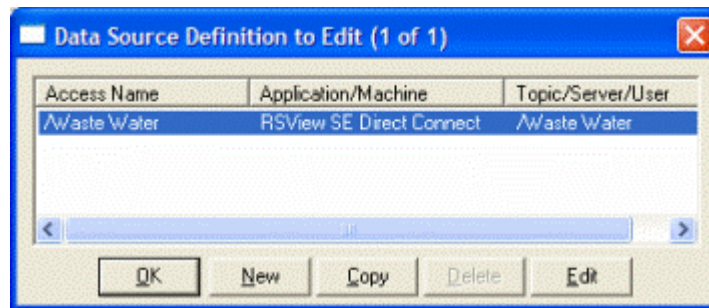
## RSView SE Direct Connect



*A screenshot of the explorer pane in FactoryTalk Studio with the area highlighted in blue.*

FactoryTalk places HMI tags in areas. You must specify the name of your area here. This field is case sensitive and the area name must be preceded by a slash, "/." In the above screenshot of the FactoryTalk Studio explorer pane, the Waste Water Project HMI server, along with its HMI alarm tags, appear under the Waste Water area. In this example, you would enter "/Waste Water" in Area Name field to monitor alarms on the Waste Water Project server.

Stand-alone or local SE applications may not have an area defined. In this case, simply enter a slash in the Area Name field.

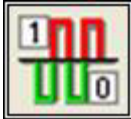


Selecting "Edit" or double-clicking on the "Access Name" will bring you back to the RSView SE Direct Connect Options window. If more than one area needs to be defined click New. Selecting "New" will bring you back to the Select Data Source Type window.



# Digital Definitions

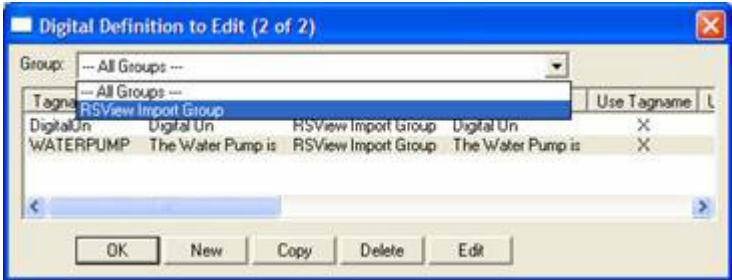
## Digital Definition



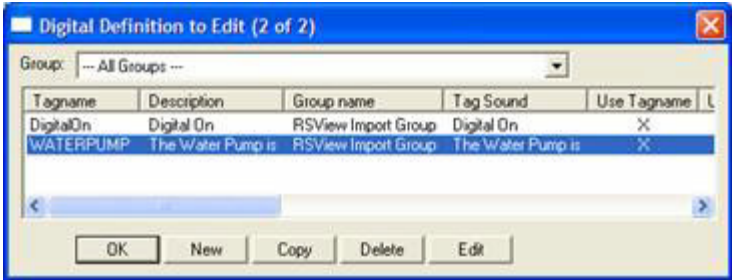
Click this icon to configure digital alarms. Digital alarms are alarms which are either on or off, also known as discrete alarms in other applications.

## Digital Definition to Edit

Alarms are arranged by Groups. Using the pull down list box, select the Group that the new or existing alarm/point is assigned. Only the alarms/points associated with the Group will be listed. You may select the appropriate "Group" by the pull-down list box, or select "All Groups".



After selecting the specific Group or selecting "All Groups," you are ready to add or modify digital alarms.



Selecting New, Edit or double-clicking on the Access Name will bring up the Digital Definition sheet.

## Base Definition

### Tagname

The Tagname is an alias for the RSView SE tag. This allows you to provide a more human friendly name for your alarm.

### Description

The Description field is used to provide a more detailed description of an alarm or point. One of the time saving features of the RSView SE Direct Connect option is how WIN-911 utilizes the "Description" field as defined within the SCADA package.

### Group Name

Alarms are organized by Group. Select the name of the group you wish to assign an alarm to here.

### Bit

This field is disabled for RSView SE alarms.

### Access Name

The Access Name refers to the Access Name of your RSView SE Data Source.

Note: If the wrong Access Name is assigned to a Tag or if the Access Name contains a syntax error in the Area Name it will not function at runtime.

### Use Tagname for Item

Select this box to copy the Tagname into the Item Name field. Use this if the name of your tag in RSView SE is user friendly enough.

### Item Name

The Item Name field is used to reference the tag inside of RSView SE. Its syntax must match RSView SE's tag exactly. It is case sensitive.

## Alarm Conditions

### Alarm and Normal Text Strings

The Alarm and Normal text strings for RSView SE/FactoryTalk View SE data points are defined within the RSView SE/FactoryTalk View SE database and do not need to be redefined here. If nothing is defined in RSView SE/FactoryTalk View SE, WIN-911 will default back to the text entered here.

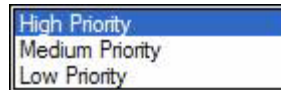
### Digital Alarm

The “Digital Alarm” state for RSView SE/FactoryTalk View SE data points are defined within the RSView SE/FactoryTalk View SE database and do not need to be redefined here. Since this information is accessed directly from Supervisory Edition, this field is disabled.

### Initial Value

The “Initial Value” for RSView SE/FactoryTalk View SE data points are defined within Supervisory Edition and do not need to be redefined here. Since this information is accessed directly, this field is disabled.

### Priority



Alarm Severity (RSView SE/FactoryTalk View SE) and Alarm Priority (WIN-911) accomplish much the same thing by sorting alarm message urgency in a way that ensures the alarm with higher urgency gets priority in the remote notification sequence. Higher priority/severity alarms will go to the front of the line in the contact sequence while alarms with the same priority/severity are handled on a first come first serve basis.

Things to note when assigning priorities:

- Only tags that fall within the globally set Alarm Severity Filter range will be monitored for remote notification regardless of assigned priority (See Options RSView SE/FactoryTalk View SE).
- During the import, WIN-911 will distribute the selected Severity range evenly through the three tiered WIN-911 Priority Range (High, Medium, and Low).
- Although the actual Alarm Severity may differ in RSView SE/FactoryTalk View SE (example tag alarm 1 and tag alarm 2 are configured for severity 1 and 2, respectively), if the alarms are grouped in the same WIN-911 Alarm Priority (example High Priority for Severities 1 and 2), they will be called out on a first come, first serve basis.

### Automatic Acknowledgement

Never

Selecting this radio button will require a manual acknowledgement of the alarm.

## On Alarm

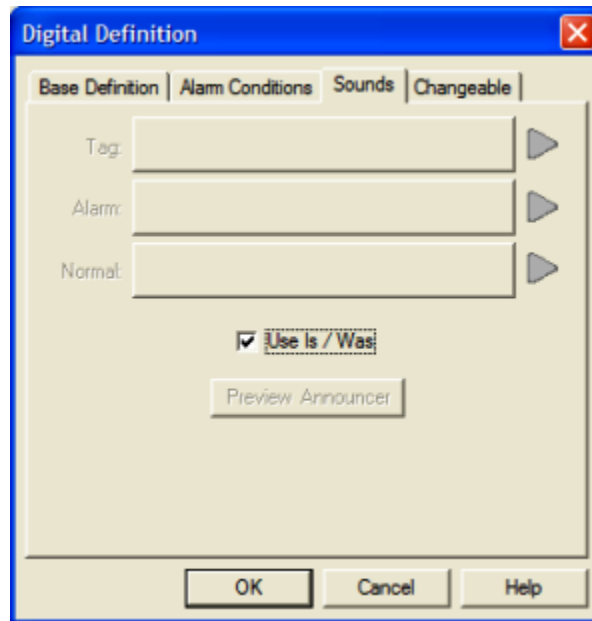
Selecting this radio button will cause the alarm to automatically become Acknowledged as it enters into an alarm condition. This option would allow audio reports of an alarm's current condition without initiating other reporting options listed in the Group. If this option is active, the message (going into an alarm condition) will not generate Pop-Up alarm messages or any of the remote notification options. Because the alarm is automatically acknowledged, the message coming back to a normal state would indicate that the condition is in the normal mode.

## On Return To Normal

Selecting this radio button will cause the alarm to automatically acknowledge as it returns to normal. This option removes the requirement that the associated alarm be responded to by a person in the event that no one has acknowledged the alarm at the time it returns to a normal condition. Experiment with all three of these options to get the results you desire.

## Sounds

Sounds are essentially a verbalization of the alarm description and the “Alarm” and “Normal” sound to be used in the audio annunciation. As with any other sounds, the sounds are selected from a dialog box. The sound and preview buttons are disabled when Dynamic sounds are selected in the data source's global options.



### Tag Sound

The Tag Sound is essentially a verbalization of the Tagname and/or the description to be used in the audio annunciation. As with any other sounds, the sounds are selected from a dialog box. This sound is required for any voice connection. See RSView SE Options concerning dynamic tag sounds.

### Alarm & Normal Sound

These sounds are the verbalization of the Alarm and Normal conditions.

Note: If Digital Alarm Prefix sound is defined, under Common Sounds, it will be appended to the beginning of the Alarm Sound.

### Use Is / Was

In some cases, using the “Is / Was” sounds will not make sense. Selecting the check-box next to “Use Is / Was” will activate its use. Leaving the check-box blank will omit its use. An example of this sound would be “The Entry Door IS open”.

### Preview Announcer

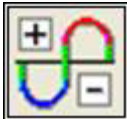
Selecting this button will allow you to review this alarm's audio as it will be heard on the local announcer for each condition of the alarm. Selecting the Auto Acknowledge option discussed above will affect whether you can test the State Acknowledged button.

## **Changeable**

This feature is not supported for RSView SE Direct Connect data sources.

# Analog Definitions

## Analog Definition

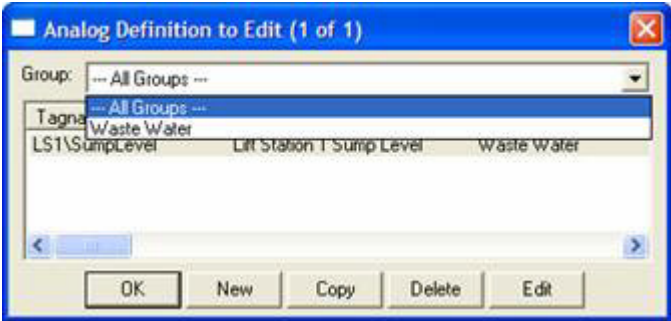


With WIN-911, alarms are classified either as Digital, or Analog data values. Analog alarms, also known as level alarms, are configured with the Analog Alarm Definition button.

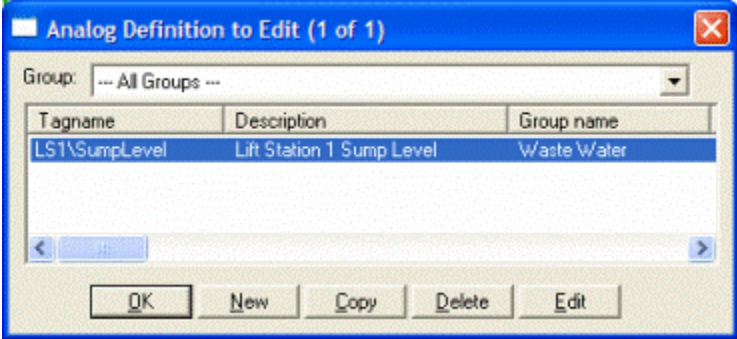
Special Note to Lite Mode Users: Analog alarms are not permitted in Lite Mode.

## Analog Definition to Edit

Alarms are arranged by Groups. Using the pull down list box, select the Group that the new or existing alarm/point is assigned. Only the alarms/points associated with the Group will be listed. You may select the appropriate "Group" by the pull-down list box, or select "All Groups".



After selecting the specific Group or selecting "All Groups," you are ready to add or modify analog alarms.



## RSView SE Direct Connect

Selecting New, Edit or double-clicking on the Tagname will bring up the Analog Definition dialog.



## Base Definition

The screenshot shows the 'Analog Definition' dialog box with the 'Base Definition' tab selected. The fields are as follows:

- Tagname: LS1\SumpLevel
- Description: Lift Station 1 Sump Level
- Group Name: Waste Water
- Engineering Units: (empty)
- Data Source: (empty)
- Access Name: /Waste Water
- Use Tagname for Item
- Item Name: LS1\SumpLevel

### Tagname

RSView SE/FactoryTalk View SE data point tag names tend to be cryptic and otherwise non-descriptive. The WIN-911 “Tagname” is a symbolic tool that allows the user to assign names to data points that are better fit for human consumption. It should be kept in mind that this is WIN-911's name for the data point, and not Rockwell's. The “Item Name” is Supervisory Edition's name for the data point and is independent of the “Tagname” (unless “Use Tagname for Item” is selected).

### Description

The Description field is used to provide a more detailed description of an alarm or point. One of the time saving features of the RSView SE Direct Connect option is how WIN-911 utilizes the Description field as defined within the SCADA package.

### Group Name

Alarms are organized by Group. Select the name of the group you wish to assign an alarm to here.

### Engineering Units

## RSView SE Direct Connect

The Engineering Units field for RSView SE/FactoryTalk View SE data points are defined within the Supervisory Edition import and can be redefined by replacing the text located here.

Note: The text here is used to generate the sound for engineering units.

## Access Name

The Access Name is used to select a predefined data conversation from the list defined in the Data Source Definitions. The RSView SE Direct Connect convention uses this field to assign both the RSView SE Direct Connect and the Area.

Note: If the wrong Access Name is assigned to a Tag or if the Access Name contains syntax errors in the Area Name it will not function at runtime.

## Use Tagname for Item

Selecting this box will cause the Tagname to be copied directly into the item name. This is useful when connecting to other tag oriented programs.

## Item Name

The Item Name is used to refer to the RSView SE tag. Its syntax must match exactly what is defined within RSView SE.

## **Conversion**

### Conversion Type

Conversion of raw data is not supported for RSView SE connections.

### Number of Decimal Places

WIN-911 supports 32 bit signed integers and 32 bit floating point values. A 32 bit integer is the default data type. For floating point numbers set the number of decimal places to something other than zero.

## Alarm Limits

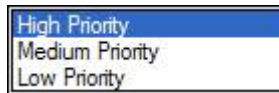
RSView SE/FactoryTalk View SE Analog Alarms allow up to 8 Thresholds to be configured. RSView SE/FactoryTalk View SE Thresholds must be either Increasing or Decreasing. An Increasing Threshold generates an alarm when the process variable goes above the Threshold, and a Decreasing Threshold generates an alarm when the process variable goes below the Threshold. Increasing Threshold alarms are mapped to WIN-911 High alarms and Decreasing Threshold alarms are mapped to WIN-911 Low alarms.

Things to keep in mind when configuring Alarm Limits

## Initial Value

The Initial Value function is set within the RSView SE/FactoryTalk View SE and is not a valid function for WIN-911. This field is disabled for the RSView SE Direct Connect.

## Priority



Alarm Severity (RSView SE/FactoryTalk View SE) and Alarm Priority (WIN-911) accomplish much the same thing by sorting alarm message urgency in a way that ensures the alarm with higher urgency gets priority in the remote notification sequence. Higher priority/severity alarms will go to the front of the line in the contact sequence while alarms with the same priority/urgency are handled on a first come first serve basis.

Things to note when assigning priorities:

- Only tags that fall within the globally set Alarm Severity Filter will be monitored for remote notification regardless of assigned priority (See Options RSView SE).
- During the import, WIN-911 will distribute the selected Severity range evenly through the three tiered WIN-911 Priority Range (High, Medium, and Low).
- Although the actual Alarm Severity may differ in RSView SE/FactoryTalk View SE (example tag alarm 1 and tag alarm 2 are configured for severity 1 and 2, respectively), if the alarms are grouped in the same WIN-911 Alarm Priority (example High Priority for Severities 1 and 2), they will be called out on a first come, first serve basis.

Note: This selection will be disabled when Dynamic Priority is enabled.

## Deadband

The “Deadband” function is set within the RSView SE/FactoryTalk View SE and is not a valid function for WIN-911. This field is disabled for the RSView SE Direct Connect.

## Automatic Acknowledgement

Never

Selecting this radio button will require a manual acknowledgement of the alarm.

### On Alarm

Selecting this radio button will cause the alarm to automatically become “Acknowledged” as it enters into an alarm condition. This option would allow audio reports of an alarm's current condition without initiating other reporting options listed in the “Group”. If this option is active, the message (going into an alarm condition) will not generate “Pop-Up” alarm messages or any of the “Dial-Out” options. Because the alarm is automatically acknowledged, the message coming back to a normal state would indicate that the condition is in the normal mode. The “Was” message would never be used.

### On Return To Normal

Selecting this radio button will cause the alarm to automatically acknowledge as it returns to normal. This option removes the requirement that the associated alarm be responded to by a person in the event that no one has acknowledged the alarm at the time it returns to a normal condition. Experiment with all three of these option boxes to get the results you desire.

## Sounds

The sound and preview buttons are disabled when Dynamic sounds are selected in the data source's global options.

### Tag Sound

The Tagname Sound is essentially a verbalization of the Tagname and/or the description to be used in the audio annunciation. As with any other sounds, the sounds are selected from a dialog box. See RSView SE Options concerning dynamic tag sounds.

### Alarm Sounds

A specific sound can be specified for each of the alarm conditions. These sounds are normally the verbalization of the phrases "above the threshold alarm," "below the threshold alarm." In addition, there is a return to normal sound which may be the phrase "in the normal range."

Note: The Common Sounds, RSView SE Only tab defines Alarm State Prefixes that can be appended to the beginning of the Alarm Sounds.

### Is / Was Selection

In some cases, using the "Is/Was" sound will not make sense. Selecting the check-box next to "Use Is/Was" will activate its use. Leaving the check-box blank will omit its use.

### Preview Announcer

Selecting this button will allow you to review this alarm's audio as it will be heard on the local announcer for each condition of the alarm. Selecting the Auto Acknowledge option discussed above will affect whether you can test the State Acknowledged button.

## **Changeable**

This feature is not supported for RSView SE/FactoryTalk View SE Direct Connect data sources.

# Watchdog Timer Definitions

## Watchdog Timer Definition



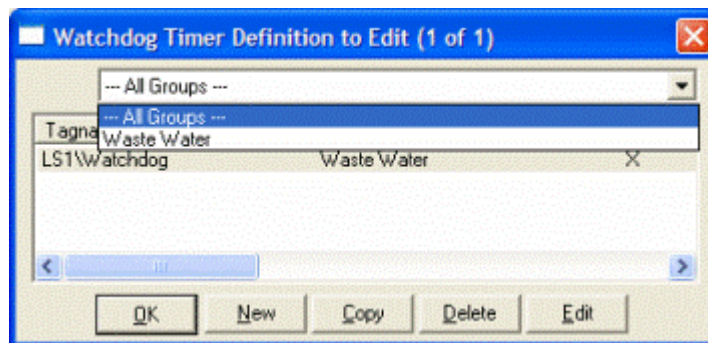
The integrity of mission critical data such as that which WIN-911 is tasked to monitor must be verifiable. This means that the data servers must have a way to demonstrate their presence and functionality. WIN-911 provides the user with Watchdog Timers for this very purpose. This function monitors one or two things (user definable) to ensure data and/or servers are healthy: 1) observe a changing alarm condition that is guaranteed to cycle at a specified rate, or 2) a message from RSView SE/FactoryTalk View SE indicating a loss of alarm information.

Note: Unlike other WIN-911 Watchdog functions, the RSView SE Watchdog monitors a changing alarm condition rather than a changing value.

To utilize the Watchdog Timer setup a data point that is continuously cycling in and out of alarm condition. A typical voice message for this condition could be: "WARNING AREA #4 HAS LOST COMMUNICATIONS WITH ALARM LOGGER."

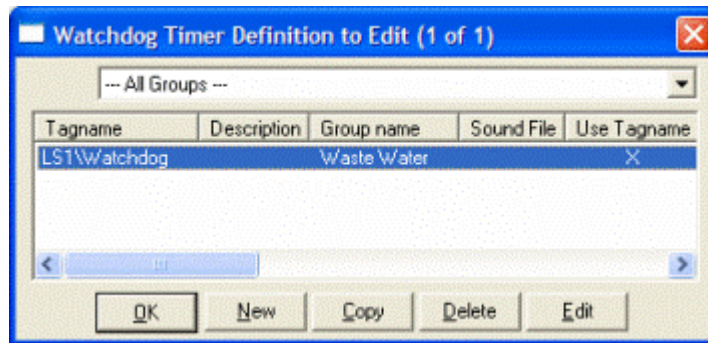
### Watchdog Timer Definition to Edit

Alarms are arranged by Groups. Using the pull down list box, select the Group that the new or existing watchdog alarm is assigned. Only the watchdogs associated with the Group will be listed. You may select the appropriate Group by the pull-down list box, or select "All Groups."



After selecting the specific Group or selecting "All Groups," you are ready to add or modify analog alarms.





Selecting New, Edit or double-clicking on the Tagname will bring up the Watchdog Timer Definition dialog.

## **Base Definition**

### **Tagname**

The Tagname is a unique identifier of an alarm/point.

RSView SE/FactoryTalk View SE Watchdog's ignore the severity level defined in RSView SE/FactoryTalk View SE for the alarm used to monitor an Area. It also ignores the selected range the user has setup in "Options."

### **Description**

The Description Field is used to provide a more detailed description of a watchdog alarm. This information is in addition to the Tagname and Group Name. It is best not to include the Tagname or alarm Group Name in this description, since it is redundant.

### **Group Name**

Alarms are organized by groups for reporting out-of-tolerance conditions. Select the Group that you wish to assign the Watchdog Timer to here.

### **Access Name**

The Access Name is used to select a predefined RSView SE Direct Connect server from the list defined in the data sources. This field must be defined.

### **Tagname for Item**

Selecting this box will cause the Tagname to be copied directly into the item name. This is useful when connecting to other tag oriented programs.

### **Item Name**

The Item Name is the name of the cycling alarm you wish to monitor within RSView SE. This field is case sensitive.

## Alarm Conditions

### Alarm and Normal

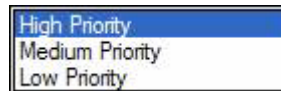
The Alarm States text identifies the normal and alarm states that appear on the alarm monitor displays and reports.

### Time-out After \_\_ Minutes

The Time-out After \_\_ Minutes field is a count down timer preset. Each time a new alarm state is reported for the selected item, the counter is reset to the preset value. If the timer ever counts down to zero, the alarm occurs. This entry is in one-minute increments.

If a value of zero minutes is configured in the field, the Watchdog alarm will be triggered by a loss of communication with the data source, or to be more specific, a loss of communication with the configured area. Since, the RSView SE Direct Connect data source can re-establish communication with WIN-911, these Watchdogs can return to normal.

### Priority



For each alarm, you may select three levels of Priority: High, Medium, and Low. For each Group, a higher priority alarm will bump a lower priority alarm down the queue to call out, even if the lower priority alarm was first in line.

### Automatic Acknowledgement

#### Never

Selecting this radio button will require a manual acknowledgement of the alarm.

#### On Alarm

Selecting this radio button will cause the alarm to automatically become Acknowledged as it enters into an alarm condition. This option would allow audio reports of an alarm's current condition without initiating other reporting options listed in the Group. If this option is active, the alarm will not generate Pop-Up alarm messages or any of the Dial-Out options.

#### On Return To Normal

Selecting this radio button will cause the alarm to automatically acknowledge as it returns to normal. This option removes the requirement that the associated alarm be responded to by a person in the event that no one has acknowledged the alarm at the time it returns to a normal condition. Experiment with all three of these options to get the results you desire.

## **Sounds**

### **Tag, Alarm, and Normal Sounds**

Like other WIN-911 alarms, the “Sounds” are essentially a verbalization of the description, and the Alarm and Normal text to be used in the audio annunciation. As with any other sounds, the sounds are selected from a dialog box. Unlike Digital and Analog Tags, Watchdog sounds are not dynamic.

### **Is/Was Selection**

In some cases, using the “Is / Was” audio will not make sense. Selecting the check-box next to “Use Is / Was” will activate its use. Leaving the check-box blank will omit its use.

### **Preview Announcer**

Selecting this button will allow you to review this alarm's entire audio as it will be heard on the local announcer, for each condition of the alarm.

## Troubleshooting

If WIN-911 and RSView SE/FactoryTalk View SE do not properly interface then check the following troubleshooting steps to resolve issue.

### WIN-911 Bridge Server

The RSView SE Direct Connect has a unique service that runs between RSView SE/FactoryTalk View SE and Scan & Alarm to provide a bidirectional interface. The WIN-911 Setup installs the service if it detects the presence of RSView SE/FactoryTalk View SE on the local computer. After the installation RSView SE/FactoryTalk View SE will have to be restarted, at which time the RSView SE/FactoryTalk View SE Client will launch the WIN-911 Bridge Service as part of its startup routine.

When running in distributed mode, RSView Clients receive information concerning what services to start based on information provided by server(s), including the command to start the WIN-911 Bridge Service. If you are deploying WIN-911 on a distributed system and require information from a remotely located server, then the administrator will need to modify the SLHMI-MLHMI Target.xml and SLHMI Target.xml on the remote machines. This is accomplished through running the XMLRSView.exe tool (located in WIN-911 V7\Tools) on the remote server machine.

Adding the \*.XML initialization files for both client and server machine:

Run the following command line from a command prompt in the folder where the XMLRSView.exe resides (for remote servers you will have to copy the file to the remote computer where the server resides):

**C:\Program Files\Specter Instruments\WIN-911 V7\Tools\XMLRSView.exe**

If WIN-911 and RSView SE/FactoryTalk View SE do not interface properly refer to Chapter 14, RSView Direct Connect Trouble Shooting Discussion, WIN-911 Bridge Service, for manual registration procedures.

Note: When a RSView SE/FactoryTalk View SE “Update” or “Upgrade” is applied to your Rockwell system, the “\*.XML” files are likely to be recreated and hence, lose the WIN-911 Bridge Server commands. It is good practice to re-run the XMLRSView executable on all WIN-911 concerned computers each time you update the Rockwell software .

The following procedures contain three independent and self-contained steps. At the completion of each step WIN-911 and RSView SE/FactoryTalk View SE should be tested for proper interface. If the test is successful then there is no need to proceed to the next step.

#### Step One: Register Service with XMLRSView.exe

To manually run the XMLRSView.exe from the command prompt within the WIN-911 Tools folder and execute the program with the following command line:

**C:\Program Files\Specter Instruments\WIN-911 V7\Tools\XMLRSView.exe**

Retest WIN-911 and RSView.

### Step Two: Manually Register Service with Notepad

There are two XML files located in Rockwell Software\Rockwell Enterprise folder that need to list the WIN-911 Bridge Service: SLHMI-MLHMI Target.xml and SLHMI Target.xml.

To locate them quickly use Explorer to navigate the Rockwell Software (most likely located in Program Files)\Rockwell Enterprise folder. Sort the files by Type and reverse the order so the XML files are on top.

Begin with the SLHMI-MLHMI Target.xml. Open the file with Notepad and look for the </HMISERVICES> section terminator. Add a line above the section terminator with the following text:

```
<HMISERVICE Name="WIN911 Bridge Service" ServiceID="{8545C8E4-06E3-4DC8-BB4B-CA454418EF73}" Client="RsHmi.Win911BridgeService.1" TestRun="0" Style="0" Managed="1"/>
```

Note: In order to avoid syntax errors Specter Instruments has placed a file in the WIN-911 Tools folder with the proper data. Open the WIN-911 Target.xml file with Notepad and Copy the "<HMISERVICE..." command line, then Paste it in the proper location.

Repeat the above procedure for the SLHMI Target.xml file.

Retest WIN-911 and RSView SE/FactoryTalk View SE.

### Step Three: Manually register Service using the Command Prompt

To manually register the service from the command prompt use the following command including the double quote (") characters surrounding the service name:

FactoryTalk View SE 6.0 and up:

```
"C:\Program Files\Specter Instruments\WIN-911 V7\Tools\6xx\WIN911 Bridge Service.exe" /RegServer
```

Previous versions:

```
"C:\Program Files\Specter Instruments\WIN-911 V7\Tools\WIN911 Bridge Service.exe" /RegServer
```

Note: Technically you do not have to go to the System32 folder to register the service but the path was included to show the location.

Retest WIN-911 and RSView SE/FactoryTalk View SE.

Should the need arise, you can manually unregister the service use the following command line:

FactoryTalk View SE 6.0 and up:

```
"C:\Program Files\Specter Instruments\WIN-911 V7\Tools\6xx\WIN911 Bridge Service.exe" /UnregServer
```

Previous versions:

**"C:\Program Files\Specter Instruments\WIN-911 V7\Tools\WIN911 Bridge Service.exe" /UnregServer**